

Thermocouple type 51

with ceramic thermowell

page : H 310 – 1e

issue 07 / 12

Particularly suitable for technical measurements in high temperature range

General:

The temperature probe consists of the thermocouple and the mechanical construction with ceramic thermowell, metallic support tube and connection device.

This design of a thermocouple is a special design for the measurement of oven temperature, which allows a temperature measurement up to 1600°C.

In order to avoid a deflexion especially of longer pipes, the vertical installation has to be preferred to the horizontal installation.

The mounting takes place via adjustable clamping-screw or stop flange, which have to be ordered as component parts separately.

Construction:

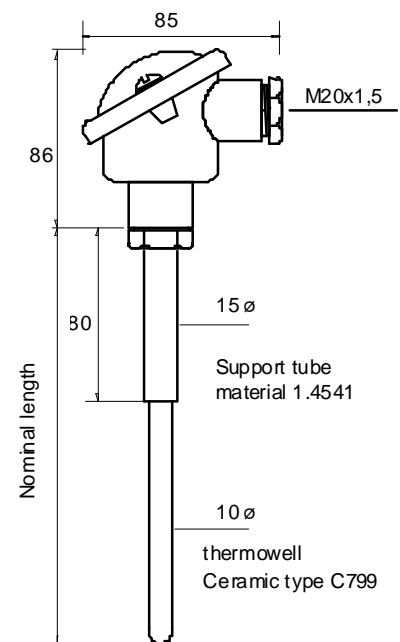
The thermocouples consists of wires with 0,35mm diameter, which are put into porecelain tubes of the type C 799 and are embedded into the dip pipe.

The dip pipe consists of an enclosed, gas-tight ceramic tube of the type C 799, which is provided with a steal made support tube.

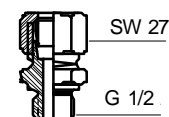
Technical data:

Measuring element	thermocouple PtRh10%-Pt type S
Measuring range	max. 1600 °C
Thermowell	ceramic type C 799
Support tube	material: steel
Mounting	clamping screw or stop flange
Connection	connecting head type B made of light metal with cable gland PG16
Protection of the type	IP 54
Drawing-number	H312-51
	For the connection to the evaluation apparat compensating cable is needed.

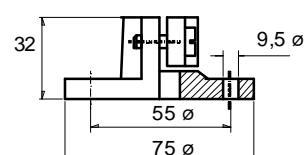
Ordering example: TF51.016 + R12-15L-V



Clamping screw



Stop flange



nominal length	item number
200 mm	TF051.020
250 mm	TF051.022
320 mm	TF051.014
400 mm	TF051.024
500 mm	TF051.016
Typ TKS16-51-...	

Component part	item number	material
clamping screw	R12-15L-V	1.4571
stop flange	UZ21-15	cast iron

Other lengths and double elements on request.



PLÖGER SENSOR GMBH

Tel. 040 / 299 48 91
Fax. 040 / 299 33 88
www.ploeger-sensor.de